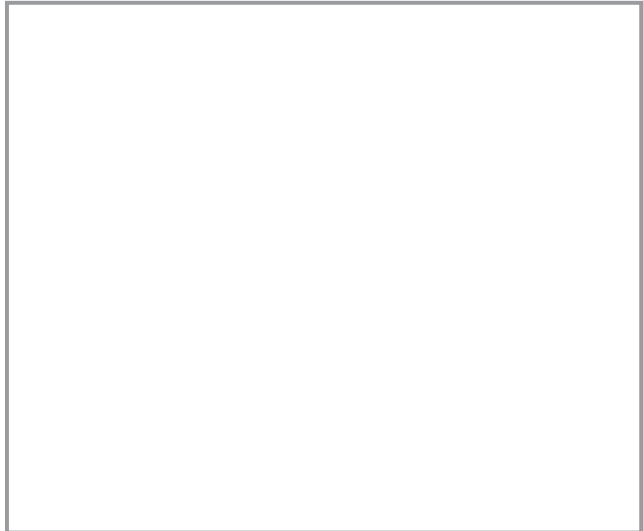


Design and Technology- How things work

The cable car

Look at the big wheel at the Top Station winching house. See where the cable goes around this wheel.

Draw a sketch in the box to show this.



Look at the cable cars.

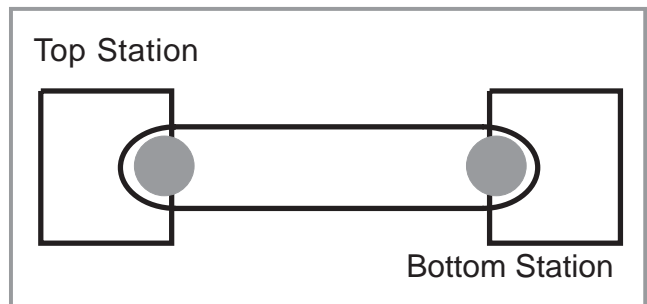
See how they are fixed to the cable.
There are three cable cars in each group.

How many groups are there?

How are they spaced?
Mark their positions on this sketch.

Can you think why they are spaced like this?

.....
.....



See how fast the cable cars move.
Why do they slow down?

Look at the cable.

It has to be very strong.
What do you think the wire is made of?

What are the cable cars made of?

Can you think why they are made of this?

Why is a cable car useful here?

.....

Did you enjoy the ride?

.....

Geography- How did it get like this?

The landscape

The landscape around you has been created by the forces of nature and the effects of people. Look around you to see what evidence there is to tell you what has changed the landscape.

.....
.....
.....

What is the main rock which makes up the Heights of Abraham?

.....

How was it made?

.....
.....



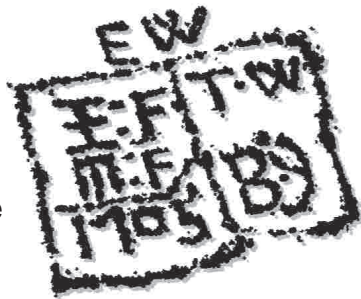
What was mined from the Masson Cavern?

.....

What signs are there of mining?

.....

Look out for the graffiti in the cavern. What does this tell us about the way the miners worked?



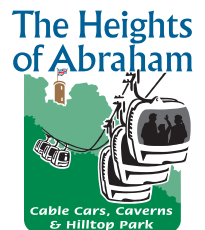
.....
.....

Tourism now has a lot to do with the way the area looks. How can we tell from the buildings on the site that the Victorians used this as a holiday resort?

.....
.....

List all the things that you can see that people have done to change the landscape of the area.

.....
.....



Geography- Maps and Photographs

Recording what we see

Maps show us the landscape of an area. They can be used to show us where to go, what an area looks like or even give us evidence about what used to happen in the area. To understand a map we must understand the symbols that a map uses.

Draw the symbol which is used on an OS map for:

a river

a road

a railway

steep cliffs

telephone box

camp site

Using a map which covers the Heights of Abraham look for evidence on the map of mining. Write down or draw what it is

.....

Are there any other mines in the area?

.....

How high is the highest point on the Heights of Abraham?

Give the co-ordinates

.....

Draw your own map of the area and decide what to include on it.

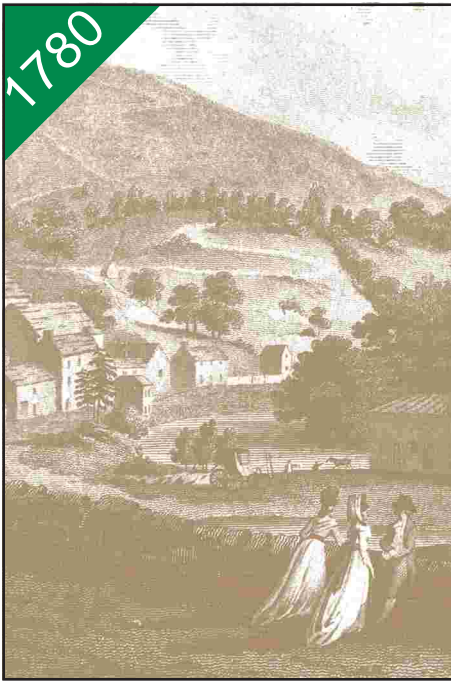
At school compare your map with photographs of the same area.

History- The Victorians

The Tourists

Look at these two pictures of Matlock Bath.

What sort of people went there in the 1780s? (Look at how they are dressed.)



What methods of transport can you see?

.....

Was there a proper road?

How did visitors get there?

Look at the photo taken in the 1880s.
What changes have taken place in 100 years?

.....

Imagine you were a visitor in Victorian times.
How would you have travelled to Matlock Bath?

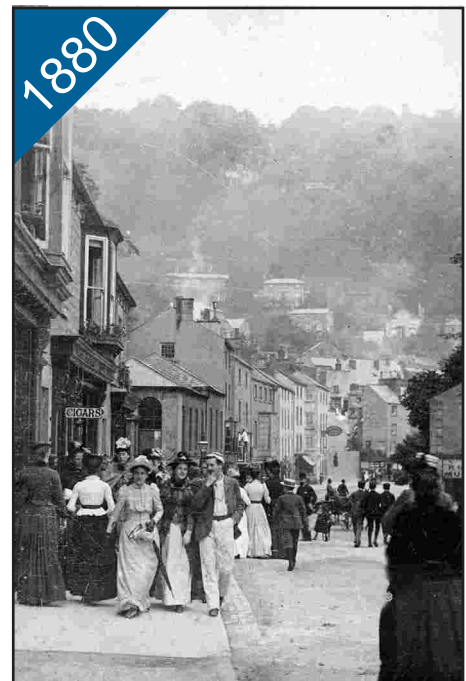
.....

How would you have reached the Heights of Abraham?

.....

How did your class travel to the Heights of Abraham?

.....



History- Clues to the past

History hunt

All around you are clues to the history of the site and its development. See if you can find out what was going on at the site at different times.

What used to be the main industry here?

What evidence can you find to tell you this?

.....

Most miners used a pick to dig out the lead ore. Can you find any of the marks left by the miners' tools? Where?

What other methods did they use? (Describe one.)

What other evidence is there that people worked underground?

When? (Give the exact dates).

There is a summer house by the path which leads down to the Great Rutland Cavern. What do you think this summer house was used for?



Find out who built the tower and why.

When was the Victoria Prospect Tower built?

In the caves

Describe what it is like inside the caves.

.....

Does anything grow in the caves?

Why does it grow where it does?

What animals might live in the caves?

Ask your guide if he has ever seen any.

Make a list of everything that grows or lives in the caves.

On the hillside

When you come out of the Masson Cavern on the top of the hill, you are in an SSSI - a Site of Special Scientific Interest. Look around you. What do you think makes it so special?

.....

If you follow the zig-zag path back down to the Masson Pavilion you can look out for some plants and animals. What did you see?

.....

Can you spot this plant? It is called spring sandwort or 'leadwort' and only grows where there is lead in the soil

Can you see anything growing on the bark of trees or stone walls? Find out what it is called.

.....

Make a list of everything that grows or lives on the hillside.

.....

Do more things live and grow outside?

Why might that be?

Remember: never pick wild flowers.

Matlock Bath, Derbyshire DE4 3PD
Telephone (01629) 582365

